

Art-Nr. M105399

# Blindflansche

Produkteigenschaften

- Edelstahl rostfrei

Technische Daten

EN 1092-1/05

Werkstoff-Nr. 1.4307

Klassifikation

eClass 11.0 37-02-02-02

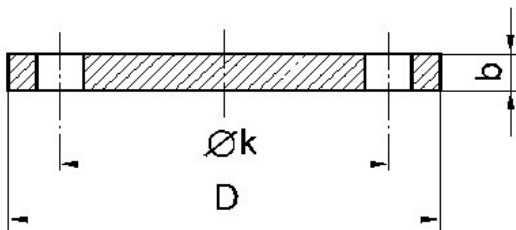
UNSPSC 11.2 40142403

eClass 10.1 37-02-02-02

eClass 12.0 37-02-02-02



| Art-Nr.                 | Bruttopreis  | DN  | D mm | b mm | Ø k mm | PN bar | Anzahl Löcher | Schrauben mm |
|-------------------------|--------------|-----|------|------|--------|--------|---------------|--------------|
| 10257855<br>534.716.100 | 16.40 / Stk  | 15  | 95   | 16   | 65     | 40     |               | 4 x M12-50   |
| 10257856<br>534.716.110 | 23.30 / Stk  | 20  | 105  | 18   | 75     | 40     |               | 4 x M12-55   |
| 10257857<br>534.716.120 | 29.10 / Stk  | 25  | 115  | 18   | 85     | 40     |               | 4 x M12-55   |
| 10257858<br>534.716.130 | 44.90 / Stk  | 32  | 140  | 18   | 100    | 40     |               | 4 x M16-55   |
| 10257859<br>534.716.140 | 51.30 / Stk  | 40  | 150  | 18   | 110    | 40     |               | 4 x M16-55   |
| 10257860<br>534.716.150 | 59.30 / Stk  | 50  | 165  | 18   | 125    | 16     |               | 4 x M16-55   |
| 10257861<br>534.716.160 | 73.10 / Stk  | 65  | 185  | 18   | 145    | 16     | 4             | 4 x M16-55   |
| 10257862<br>534.716.170 | 74.20 / Stk  | 65  | 185  | 18   | 145    | 16     | 8             | 8 x M16-55   |
| 10257863<br>534.716.180 | 93.60 / Stk  | 80  | 200  | 20   | 160    | 16     |               | 8 x M16-60   |
| 10257864<br>534.716.190 | 110.00 / Stk | 100 | 220  | 20   | 180    | 16     |               | 8 x M16-60   |
| 10257865<br>534.716.200 | 167.50 / Stk | 125 | 250  | 22   | 210    | 16     |               | 8 x M16-65   |
| 10257866<br>534.716.210 | 210.00 / Stk | 150 | 285  | 22   | 240    | 16     |               | 8 x M20-70   |
| 10257867<br>534.716.220 | 325.00 / Stk | 200 | 340  | 24   | 295    | 16     |               | 12 x M20-75  |



Alle Preise in CHF. Unsere Preise sind Richtpreise und unverbindlich. Lieferung erfolgt nur innerhalb CH/FL.

